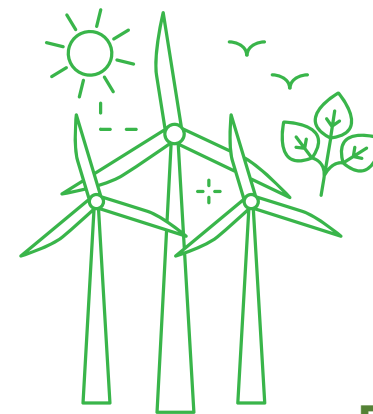


EVERFLOW
MOTOR YOUR LIFE



EVERFLOW DC FAN Automotive application guide



EVERFLOW TECHNOLOGY CO.,LTD.

Cooling Technology in

Vehicle



ADAS
R4020



Amplifier
R4010 / B4510



Head Unit
R4010 / R7025



AUDIO
R4010 / B4510



Battery Module system
B7530 / B7015



Charging Station
B5020 / R4020 / R12038

Converter
R4020

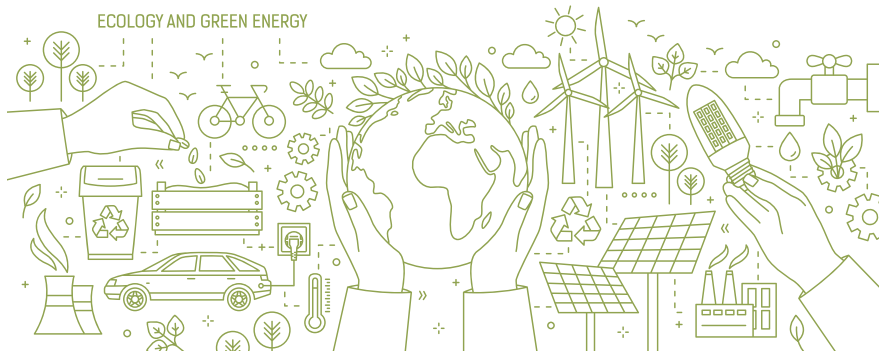


SEAT CUSHION
R5015 / B7530



CUP HOLDER
B6025



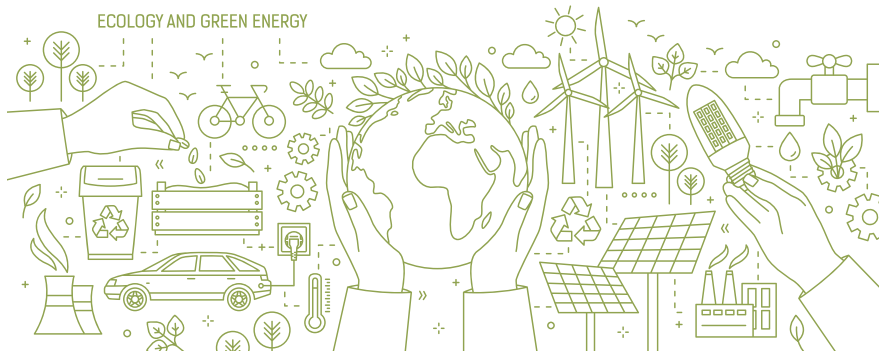


EVERFLOW is committed to the professional design and manufacture of diverse cooling fans and modules, providing innovative and efficient cooling solutions. Follow the international vehicle regulations, quality system verification and control; EVERFLOW can meet the strict requirements of the smart vehicle safety system.

IATF 16949 CERTIFICATION
 -APQP/FEMA/MSA/PPAP/SPC CAPABLE
 FOLLOW VDA 6.3 / VDA 6.5 GUIDELINES
 AEC-Q100 / Q101 / Q200 CERTIFICATION
 ANSI/ESD S20.20 CERTIFICATION
 AUTOMOTIVE DEDICATED LINE
 CONTINUOUS IMPROVEMENT TEAM

Axial Fan

SIZE(mm)	Model	Votage	Bearing	IP Protection	Operating temperature(°C)	Application
40X40X10	R4010-A	5V / 12V	2Ball	MAX for IP55	-40 ~ 85	Amplifier/Audio
40X40X10	R4010-B	5V / 12V	2Ball	MAX for IP55	-40 ~ 85	Head Unit
40X40X20	R4020	13. 5V	2Ball	MAX for IP68	-40 ~ 105	Converter/ADAS/Charging station
50X50X15	R5015	13. 5V	2Ball	MAX for IP55	-40 ~ 85	Seat Cushion
70X70X25	R7025	13.5V	2Ball	MAX for IP55	-40 ~ 85	Head Unit
120X120X38	R12038	24V	2Ball	MAX for IP68	-40 ~ 85	Charging Station



EVERFLOW is committed to the professional design and manufacture of diverse cooling fans and modules, providing innovative and efficient cooling solutions. Follow the international vehicle regulations, quality system verification and control; EVERFLOW can meet the strict requirements of the smart vehicle safety system.

IATF 16949 CERTIFICATION
 -APQP/FEMA/MSA/PPAP/SPC CAPABLE
 FOLLOW VDA 6.3 / VDA 6.5 GUIDELINES
 AEC-Q100 / Q101 / Q200 CERTIFICATION
 ANSI/ESD S20.20 CERTIFICATION
 AUTOMOTIVE DEDICATED LINE
 CONTINUOUS IMPROVEMENT TEAM

Blower

SIZE(mm)	Model	Votage	Bearing	IP Protection	Operating temperature(°C)	Application
45X45X10	B4510	5V / 12V	2Ball	MAX for IP55	-40 ~ 85	Amplifier/Audio
50X50X20	B5020	12V	2Ball	MAX for IP55	-40 ~ 70	Charging Station
60X60X25	B6025	12V	2Ball	MAX for IP55	-40 ~ 85	Cup Holder
70X70X15	B7015	12V	2Ball	MAX for IP55	-40 ~ 85	Battery module system
75X75X30	B7530	12V	2Ball	MAX for IP55	-40 ~ 85	Battery module system
97X97X33	B9733	12V	2Ball	MAX for IP55	-40 ~ 70	Charging Station